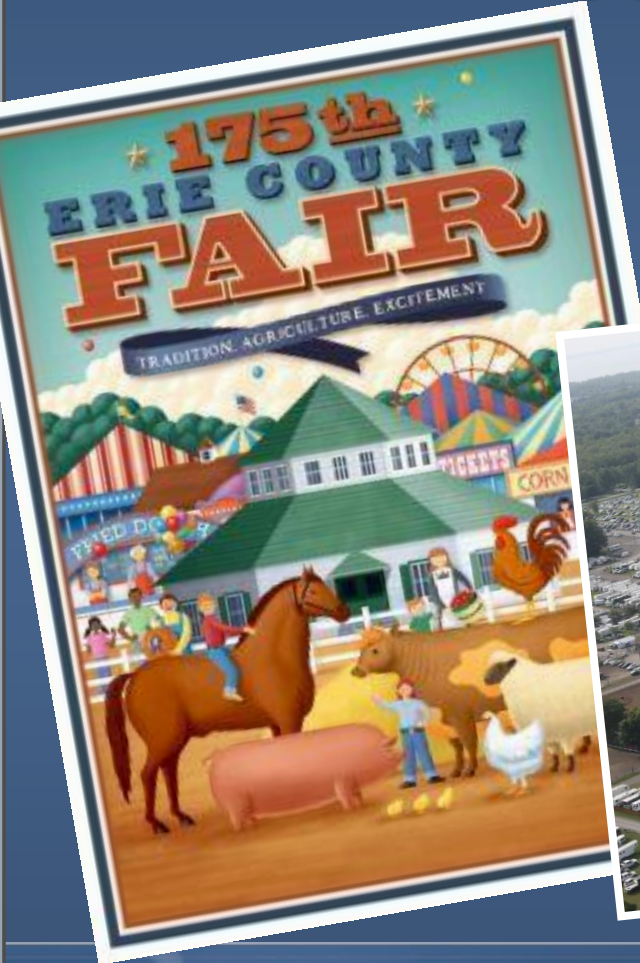


Emergency Planning: *A Fair Approach*



#ThinkFair&Safe

A PLAN FOR PUBLIC SAFETY & EMERGENCY MANAGEMENT AT THE ERIE COUNTY FAIR



Erie County Fair: By the Numbers

- 275 Acres
- 86 permanent buildings and structures
- 4 green parks
- 15,000 parking spaces
- 2017 Attendance:
1,193,279
 - 21% increase from 2016
 - Fair record 2014 = 1,220,101



#ThinkFair&Safe

A PLAN FOR PUBLIC SAFETY & EMERGENCY MANAGEMENT AT THE ERIE COUNTY FAIR





What Could Happen?

Fear at the Fair



#ThinkFair&Safe

A PLAN FOR PUBLIC SAFETY & EMERGENCY MANAGEMENT AT THE ERIE COUNTY FAIR





Advance Warning?

-----Original Message-----

From: NWS - NY-Alert [mailto:NYALERT@nyalert.gov]

Sent: **Thursday, July 20, 2017 12:42 PM**

Subject: **Tornado Warning issued July 20 at 12:36PM EDT until July 20 at 1:00PM EDT by NWS Buffalo**

Issued By: NWS Buffalo (Western New York) Affected Jurisdictions: Cattaraugus, Erie, Wyoming Counties

Headline: Tornado Warning issued July 20 at 12:36PM EDT until July 20 at 1:00PM EDT by NWS Buffalo

The National Weather Service in Buffalo has issued a* Tornado Warning for...Southwestern Wyoming County in western New York...Northeastern Cattaraugus County in western New York...Southeastern Erie County in western New York...* Until 100 PM EDT.* At 1236 PM EDT, a severe thunderstorm capable of producing a tornado was located over Hamburg, moving east at 40 mph.

HAZARD...Tornado.SOURCE...Radar indicated rotation. IMPACT...Flying debris will be dangerous to those caught without shelter. Mobile homes will be damaged or destroyed. Damage to roofs, windows, and vehicles will occur. Tree damage is likely.* Locations impacted include...West Seneca, Lackawanna, Hamburg, East Aurora, Boston, Eden, Colden and Orchard Park. This includes Interstate 90 between exits 57 and 56.

TORNADO...RADAR INDICATED HAIL...

TAKE COVER NOW! Move to a basement or an interior room on the lowest floor of a sturdy building. Avoid windows. If you are outdoors, in a mobile home, or in a vehicle, move to the closest substantial shelter and protect yourself from flying debris.



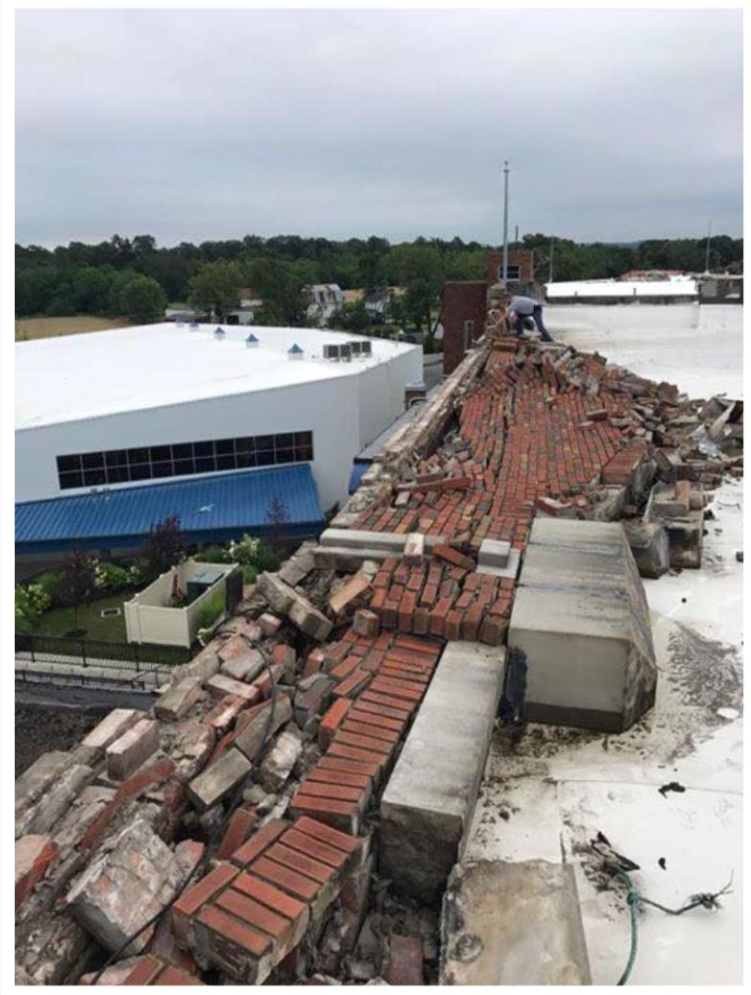
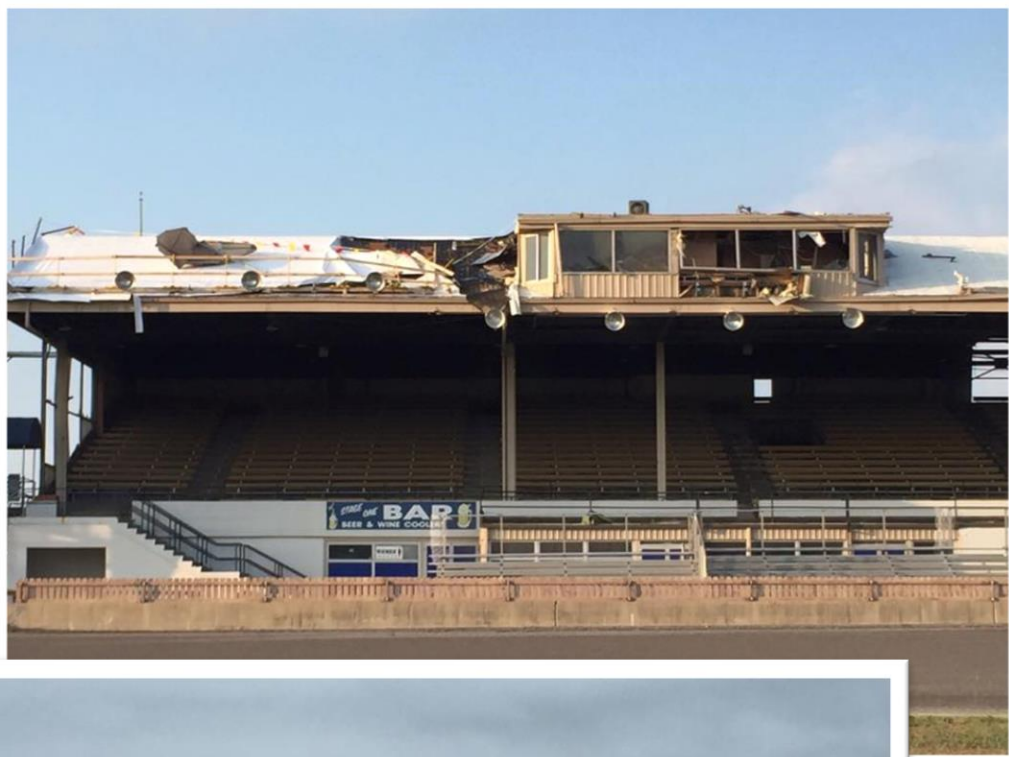
ERIE COUNTY FAIR

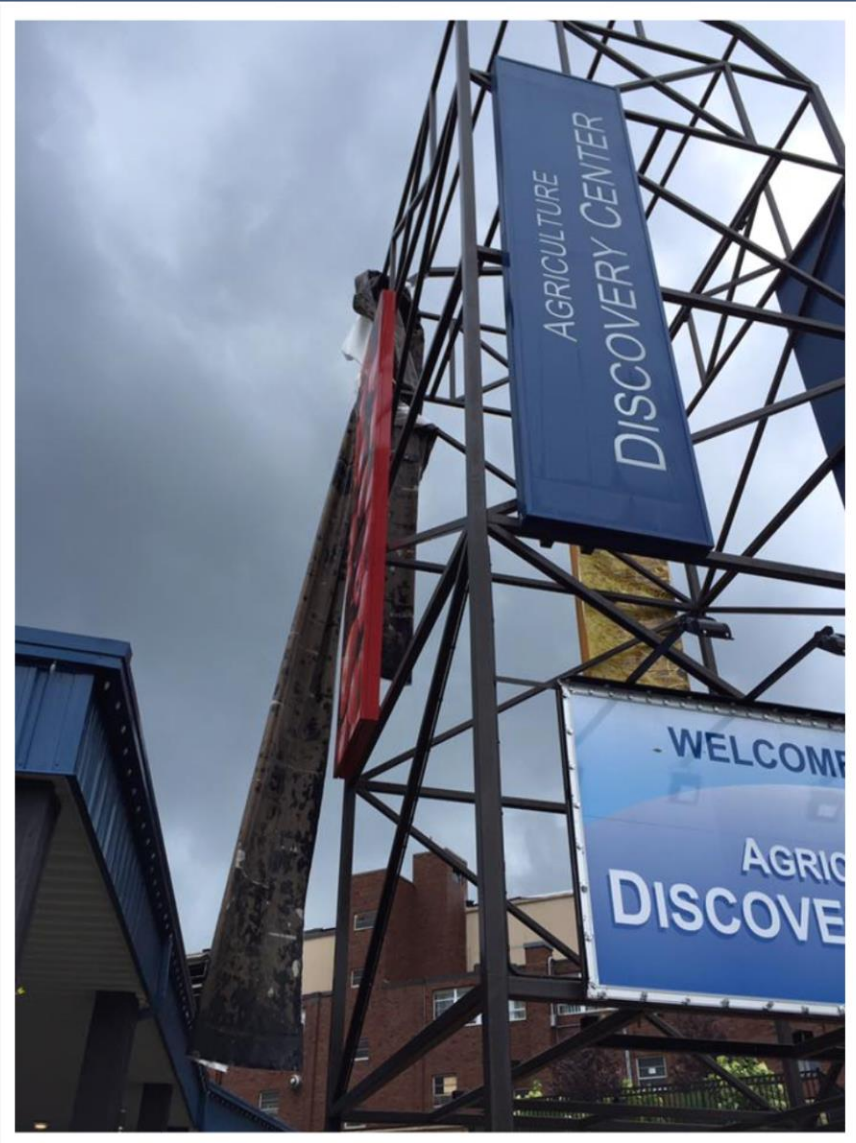




#ThinkFair&Safe
A PLAN FOR PUBLIC SAFETY & EMERGENCY MANAGEMENT AT THE ERIE COUNTY FAIR











If Tornado Had Hit Erie County Fair After it Opened, What Would Have Happened?

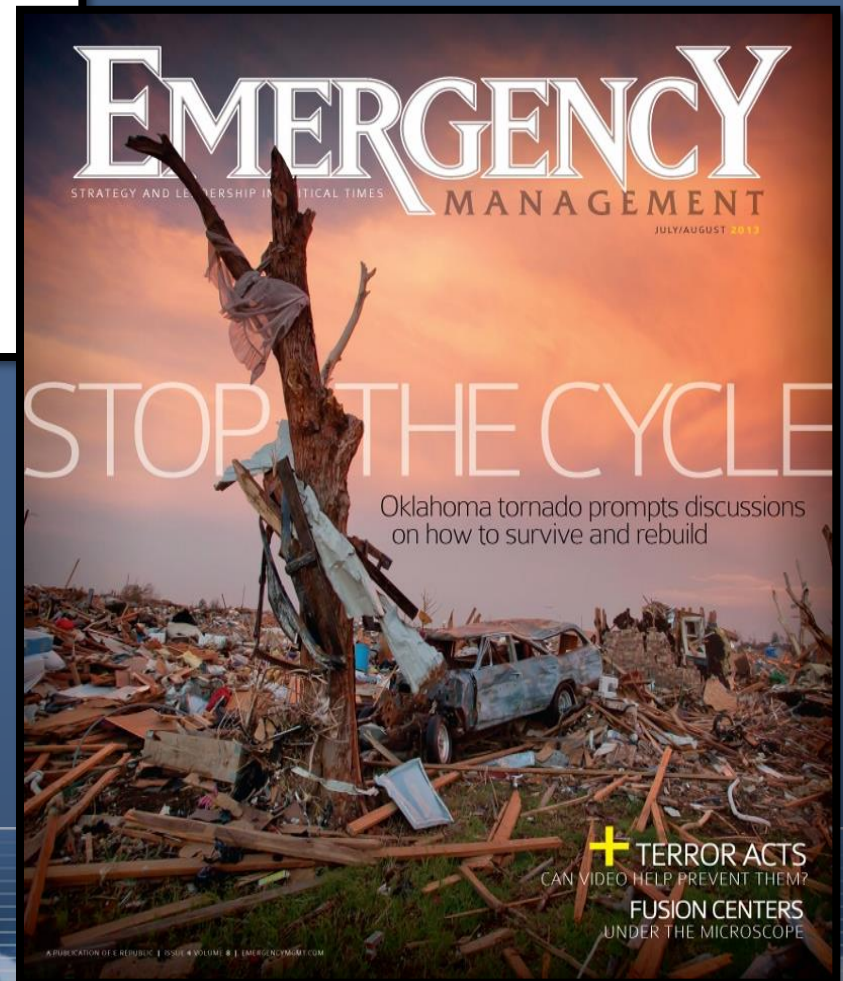
'You wouldn't have a fair the next day and you would be doing National Guard cleanup. I've lived it and done it.'

BY BARBARA O'BRIEN, THE BUFFALO NEWS, N.Y. /

**Buffalo News
Interview
7/27/2017**

#ThinkFair&Safe

A PLAN FOR PUBLIC SAFETY & EMERGENCY MANAGEMENT AT THE ERIE COUNTY FAIR



NEW VIDEO

6:39 PM
5
KPIX



0:00 / 0:48



OHIO STATE FAIR OPENING DAY
7/26/2017

#ThinkFair&Safe

A PLAN FOR PUBLIC SAFETY & EMERGENCY MANAGEMENT AT THE ERIE COUNTY FAIR



NEWS RELEASE

Contact: Martin Biniasz • Marketing & Communications • (716) 435-3678 • mbiniasz@ecfair.org

Contact: Holly Smyczynski • Marketing & Communications • (716) 818-2007 • hollys@ecfair.org

5600 McKinley Parkway • Hamburg, New York • USA • 14075

Media Twitter: [@ECFairMedia](https://twitter.com/ECFairMedia) • Website: ECFair.org

Statement in Response to Ohio State Ride Incident

For Immediate Release: Thursday, July 27, 2017

The Erie County Fair extends our deepest condolences to the families and friends of those affected in the accident at the Ohio State Fair. Fair management is reviewing all available information on this incident as well as our emergency management plan while preparations continue for opening day of our 178th Fair.

The Erie County Agricultural Society's amusement ride safety program is designed to ensure that all rides in operation during the Erie County Fair meet or exceed stringent New York State and ride manufacturer safety and maintenance requirements.

Rides and attractions are subject to a three level inspection process that involves our midway provider, New York State and an independent amusement ride safety service contracted by the Erie County Fair. Inspection of rides takes place prior to the opening of the midway during ride setup. Daily inspections continue during the entire 12-day run of the Fair.





ERIE COUNTY FAIR





Welcome to the Fair!

ESSEX COUNTY FAIR

Est.
1820

EXIT

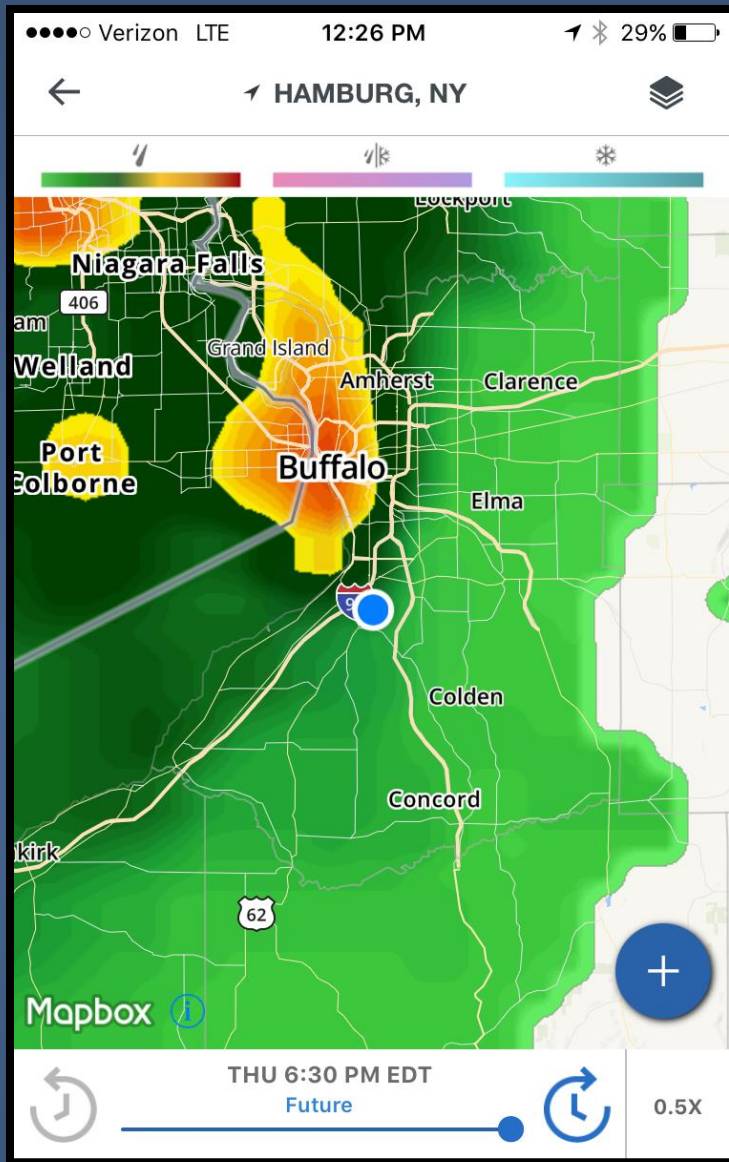
GATE 4
Admission is FREE
to Spectators
SIXTH ANNUAL
ESSEX COUNTY FAIR
WHEELCHAIR ACCESS
Available at Gate 4



#ThinkFair&Safe
A PLAN FOR PUBLIC SAFETY & EMERGENCY MANAGEMENT AT THE ERIE COUNTY FAIR







Day 11: 8/19/17



#ThinkFair&Safe

A PLAN FOR PUBLIC SAFETY & EMERGENCY MANAGEMENT AT THE ERIE COUNTY FAIR



IER.COM

 **PET**
CUSTOM EMBROIDERED
SUPERS









Posted by **Marty Brownsey**

162 Views



#ThinkFair&Safe

A PLAN FOR PUBLIC SAFETY & EMERGENCY MANAGEMENT AT THE ERIE COUNTY FAIR

Bert
Weid

ENTER

ENTER



CO



Wendy's
Original
1885 BURGER

Original SR-000
Original with Chapter 9A.
Initials of any or all of the following:

- Boardman, Elizabeth
- Boardman, Margaret
- Boardman, Mary
- Boardman, John
- Boardman, William
- Boardman, Robert



CHICKEN & STEAK BBQ

pepsi
CHICKEN \$5.95
STEAK \$5.95
RIBS \$5.95
BEEF \$5.95
PORK \$5.95
FISH \$5.95
VEGETARIAN \$5.95
CHILDREN'S \$3.95
DRINKS \$1.95
DESSERTS \$1.95
SPECIALS \$5.95
STEAK SAND \$5.95
STEAK WHEEL \$5.95
PASTA \$5.95



Bert
Weidner's **CHICKEN & STEAK** BBQ





Bert Weidner's CHICKEN & STEAK BBQ

ball Bombers
BEEF SANDWICH
O, SLOW ROASTED BEEF ON FRENCH BREAD

NEWS RELEASE

Contact: Martin Biniasz • Marketing & Communications • (716) 435-3678 • mbiniasz@ecfair.org
Contact: Holly Smyczynski • Marketing & Communications • (716) 818-2007 • hollys@ecfair.org
5600 McKinley Parkway • Hamburg, New York • USA • 14075
Media Twitter: @ECFairMedia • Website: ECFair.org

Statement Regarding Weidner's BBQ Fire

For Immediate Release: Sunday, August 20, 2017

At approximately 8:00p Saturday evening, a fire was reported inside the Weidner's BBQ Building located near the back of the Grandstand and the Showplex.

The Armor Volunteer Fire Company, the Fair's onsite fire service provider, was the first to respond to the scene. Additional support was provided by units from Scranton Volunteer Fire Company, Hamburg Volunteer Fire Department, Orchard Park Fire Company, and Lake Shore Volunteer Fire Company. Additional equipment was on site provided by the Woodlawn Volunteer Fire Company, Newton Abbott Fire Company and the Eden Volunteer Fire Company.

Town of Hamburg Office of Emergency Management, Erie County Sheriffs, New York State Police and US Department of Homeland Security helped with evacuation and securing scene.

All these units were on the Fairgrounds prior to the fire as part of the Fair's normal response to regular and special events.

Six patrons were treated on site for smoke inhalation, one of which was transported for further observation. Two firefighters were evaluated at the scene and released.

No animals were injured. The midway area near the building was closed for the remainder of the evening and is scheduled to reopen for the final day of the Fair on Sunday.

The cause of the fire is currently under investigation by the Town of Hamburg Police Department Fire Investigation Unit.

About Weidner's: Eden-based Bert Weidner's Farms has been serving up barbecue-style chicken at their location behind the Grandstand since 1956. In the 1990's, Charlie Gerber and his wife Mary Weidner took over operations of the business.



#ThinkFair&Safe

A PLAN FOR PUBLIC SAFETY & EMERGENCY MANAGEMENT AT THE ERIE COUNTY FAIR

Nick Charlap's

ICE CREAM



Nick Charlap's
SUNDAES

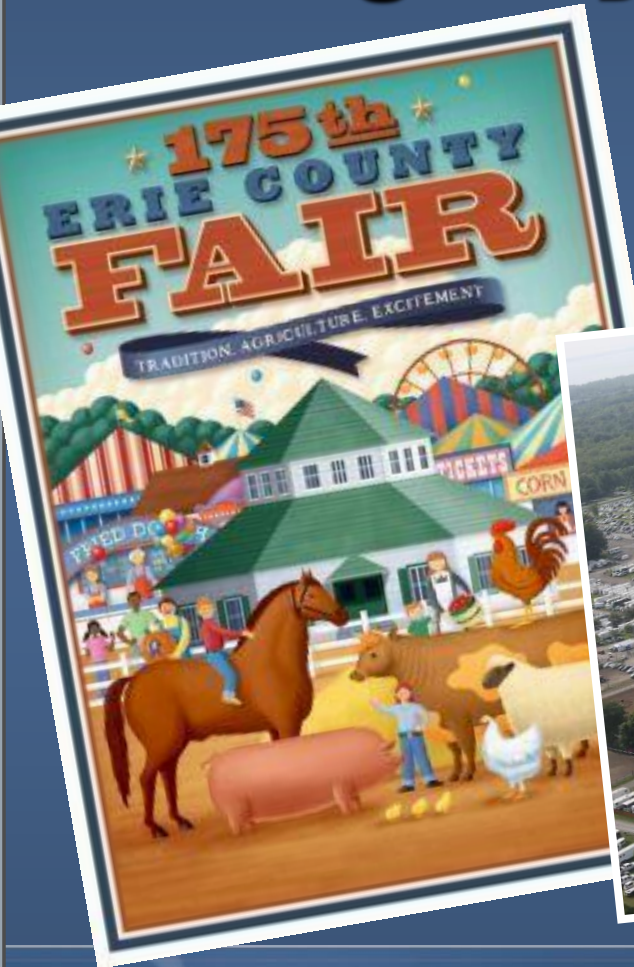
HOT FUDGE	\$4.00
CHOCOLATE SAUCE	\$4.00
HERMAN	\$4.00
RED BERRY	\$4.00
CHOCOLATE	\$4.00



#ThinkFair&Safe

A PLAN FOR PUBLIC SAFETY & EMERGENCY MANAGEMENT AT THE ERIE COUNTY FAIR

Setting the Stage for Emergency Planning



#ThinkFair&Safe

A PLAN FOR PUBLIC SAFETY & EMERGENCY MANAGEMENT AT THE ERIE COUNTY FAIR



Erie County Fair

The first 173 Years...

Improve Upon:

- Accountability of Staff, Volunteers, Vendors and Public Safety Personnel
- Public Safety Coordination and Partner Integration
- Emergency Planning
 - Did not use ICS



Luck is not a plan

#ThinkFair&Safe

A PLAN FOR PUBLIC SAFETY & EMERGENCY MANAGEMENT AT THE ERIE COUNTY FAIR



Indiana State Fair

Stage Collapse

August 13, 2011

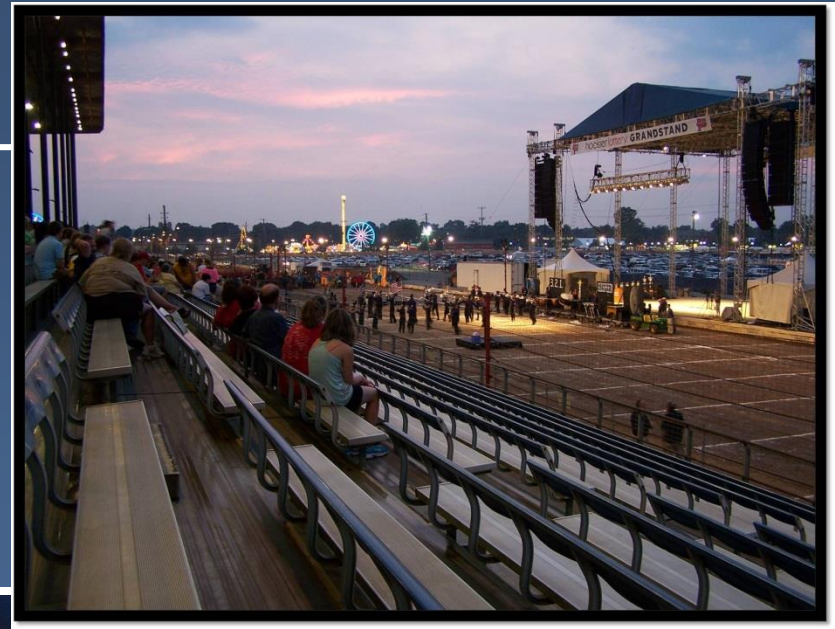


INDIANA STATE FAIR COMMISSION
EMERGENCY RESPONSE PLAN



Findings

- ICS training was recommended for all fair staff
- ICS was not used for day-to-day fair ops
- Emergency Response plans were not fully developed
- The plans were not referenced or used on August 13, 2012
- No clear responsibility assigned for overall public safety
- The plans did not address multi-agency coordination
- Contractors were not aware of the emergency plans



#ThinkFair&Safe

A PLAN FOR PUBLIC SAFETY & EMERGENCY MANAGEMENT AT THE ERIE COUNTY FAIR





Bringing Calm to Chaos: **Managing the Response & Recovery from the Crash of Continental Flight 3407**

February 12, 2009



Deputy Fire Coordinator Tiger Schmittendorf
Erie County Department of Emergency Services

Major Christopher Cummings
New York State Police – Troop A

February 12, 2009 – 10:18pm

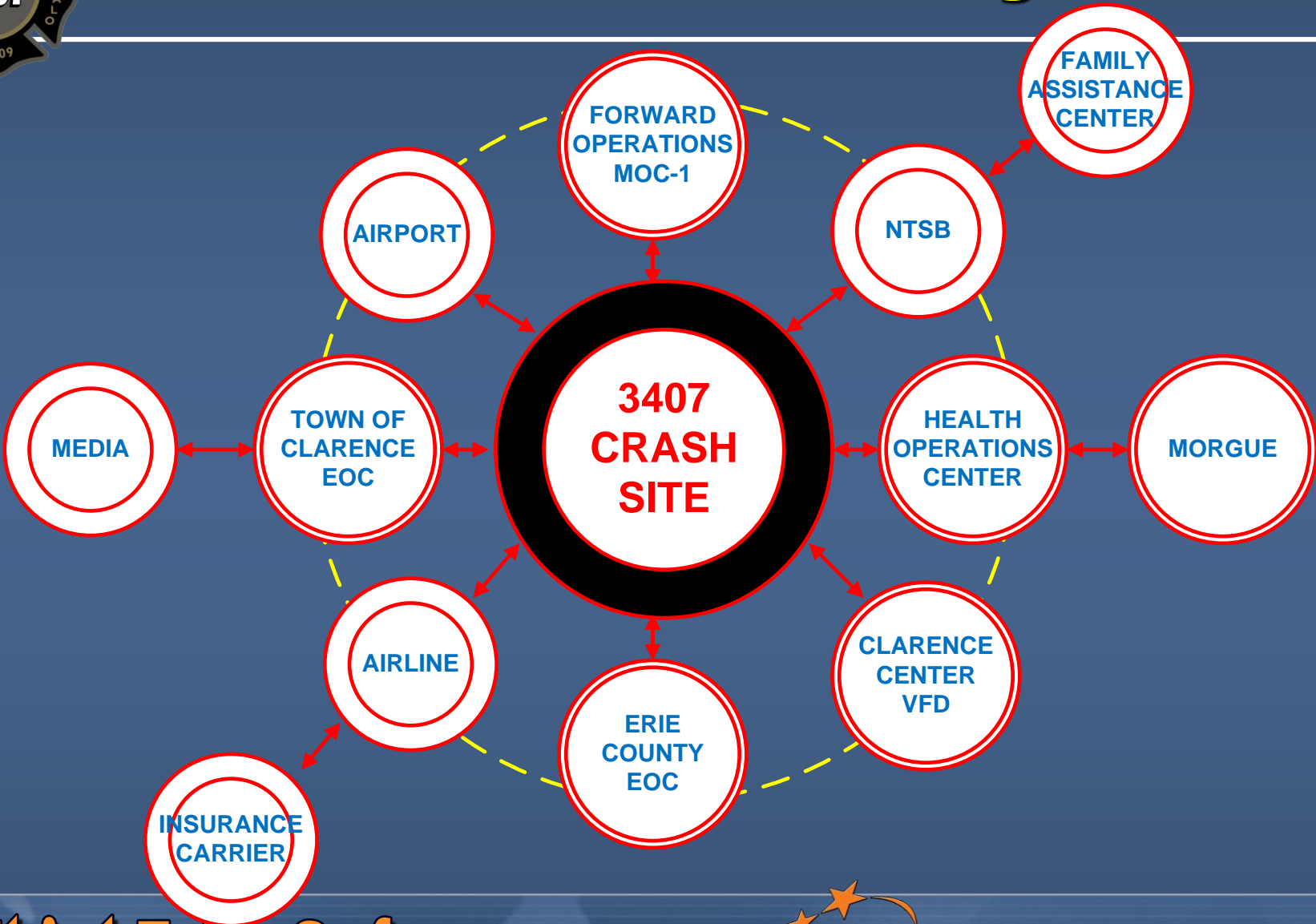


#ThinkFair&Safe
A PLAN FOR PUBLIC SAFETY & EMERGENCY MANAGEMENT AT THE ERIE COUNTY FAIR





Coordination Challenges





Coordination Challenges

Who's in Charge of What?

Who's Responsible for What?

- Local
- County
- State
- Federal
- Airline: Continental / Colgan / Insurer

Multiple Facilities and Agencies to Support

Inter-Agency Communications

Geo-Political Influences

#ThinkFair&Safe

A PLAN FOR PUBLIC SAFETY & EMERGENCY MANAGEMENT AT THE ERIE COUNTY FAIR



Day 2: Challenges of Friday-Feb. 13, 2009



#ThinkFair&Safe
A PLAN FOR PUBLIC SAFETY & EMERGENCY MANAGEMENT AT THE ERIE COUNTY FAIR



Unified Command

Tom Fargione (SEMO) / T. Schmittendorf (EC)

NTSB / FBI / SEMO / BNIA FD / NYSP / ESCO Lt. Savage

Safety - Morrissey/Parker

PIO - EC SD B. Gibbons (NYSP)

Liason - Bryan Fiume

Operations

Messing / Barnes / Prunoske (P/O)

L/E Branch

Capt. Nigerlli

- Perimeter - DEC / NYSP
- Residential - ECSO - Shultz
NYSP - Dischner
- Escort - ECSO - Wilkinson
NFTA -
- Releif - NYSP - Dischner
- Traffic - ECSO - Sgt. Schultz
NYSP - Sgt. Schramm

Emergency Services

Clarence EMO

- Fire - BNIA / Buffalo Fire
- Hazmat - Decon - EC Haz-Mat
Monitoring - FBI, ERT
- EMS - Twin City EMS
SMART

Planning

D. Brooks / J.T. Glass

- Resouce Unit - OFPC - Rifenburg
Greenwood
- Situation Unit - OFPC - Dickinson
- Tech. Specialist - NWS - J Levan
- DLAN - E.C. R. Lander
- GIS - Langella (IMT)
E.C. - Pecak/Russell/Gamgemi
- De-Mob - T. Reiker (SEMO)

Logistics

Bronisz / Mihalko (Dep.)

Service

- Communitications - Jaeb
Whittington
- Medical - Hoffman
- Food - Ferraraccio

Support

- Supply - Ross
Zastrow
- Facilities - D. Raquet

Finance

Peggy Lagree

- Cost - Valerie
- Procurement - V

Security

- ECMC - TPR. Pittman
- EC EOC - Dep. Bork

Human Needs

Frazer

- CISM Group-Frazer EOC 0800 --> 2000
Clarence Center FD 0600 --> 1200
1200 --> 1800
- MMRS ECMC 0700 --> 1200
1200 --> 1900

Health Department H.D.C.

Dr Woytash

Morgue Division

- Medical Examiner Staff
- D - Mort

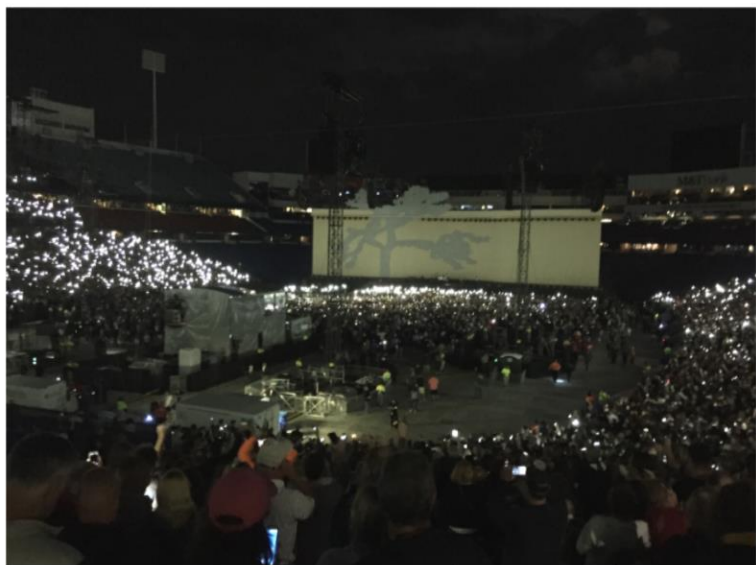
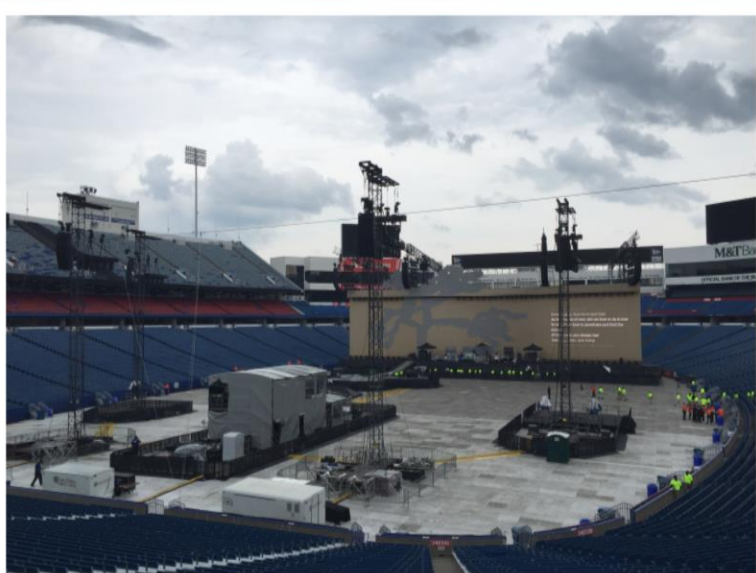
Scene Division

- T/F 1 - Vertes
- T/F 2 - Nowak
- Transportation - Bewack
- Doc - NYSP
- Cat Recovery
- S.P. Investigation - BCI



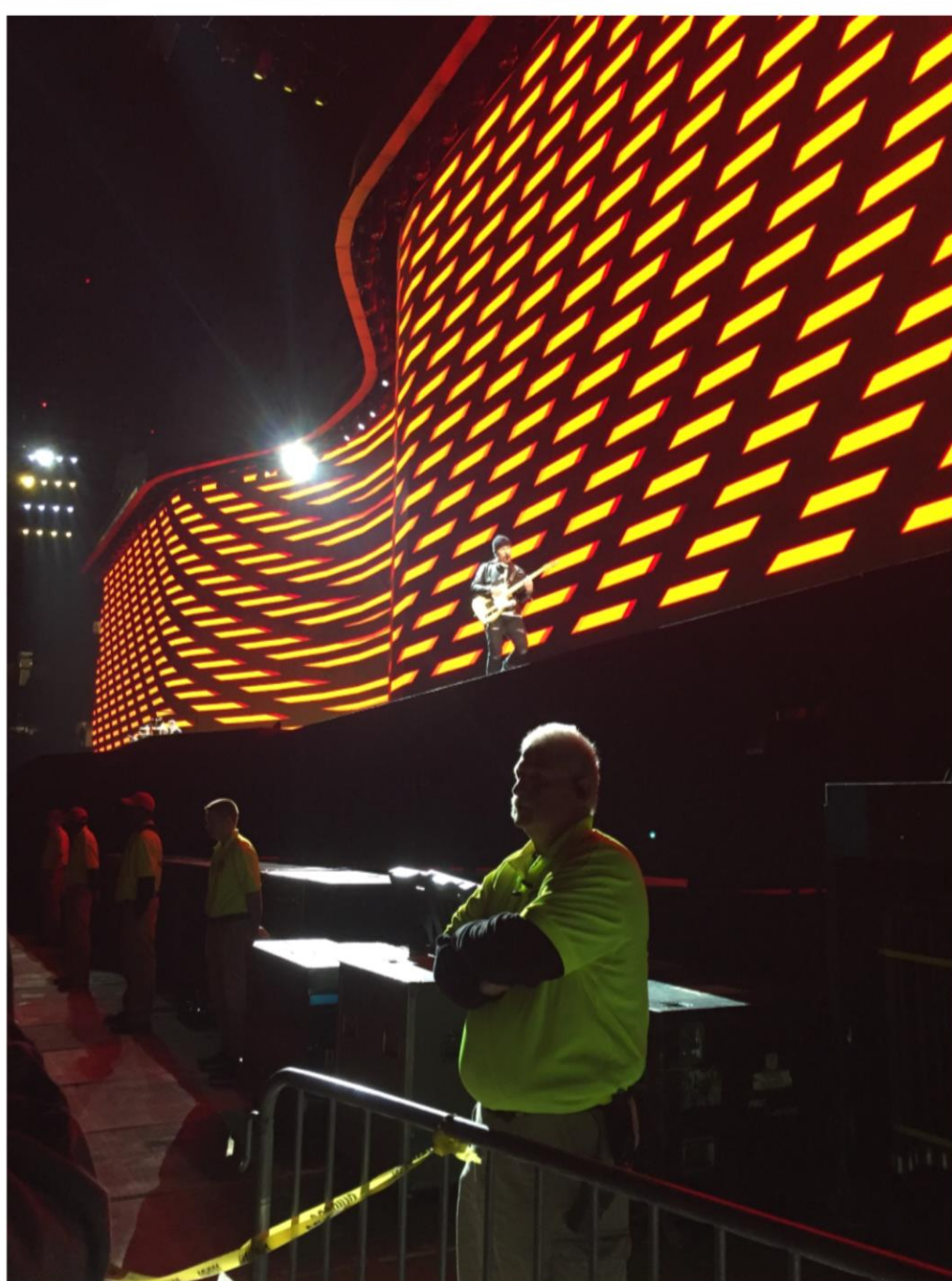
#ThinkFair&Safe

A PLAN FOR PUBLIC SAFETY & EMERGENCY MANAGEMENT AT THE ERIE COUNTY FAIR



#ThinkFair&Safe

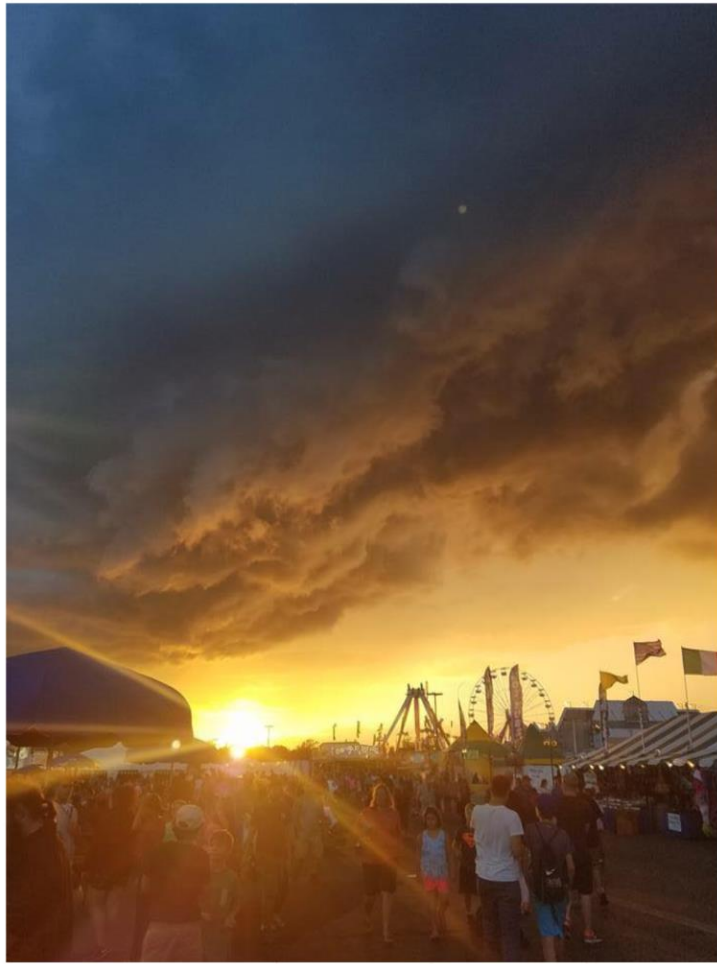
A PLAN FOR PUBLIC SAFETY & EMERGENCY MANAGEMENT AT THE ERIE COUNTY FAIR



Specific Hazards: Weather

The primary protective actions in the event of severe weather will be:

- To take shelter in a sturdy building, including major buildings, barns, stables, etc. – or vehicles as appropriate. People should be discouraged from taking shelter under awnings, tents, temporary or similar structures.
- To suspend operation of rides and similar venues, and evacuate persons as necessary from same



#ThinkFair&Safe
A PLAN FOR PUBLIC SAFETY & EMERGENCY MANAGEMENT AT THE ERIE COUNTY FAIR

Shelter/Evacuation:

Shelter in place “partial evacuation” - Out of open areas – due to wind, rain, hail, lightning, storm or other emergency;

- Options: Direct guests/personnel to covered buildings identified and labeled as emergency shelters – *or to vehicles in parking lots.*

Complete evacuation off-property to: private vehicles with traffic routes to pre-designated local facilities: *fire stations, schools, churches, colleges and other suitable buildings.*

EVACUATION TRAFFIC POSTS



- 1) SOUTH PARK MAIN GATE
NYS POLICE
- 2) SOUTH PARK @ QUINBY DR.
HAMBURG POLICE-SCRANTON FIRE
- 3) QUINBY SERVICE GATE EXIT
FAIR PARKING STAFF
- 4) QUINBY MAIN GATE EXIT
FAIR PARKING STAFF
- 5) QUINBY @ FAIRGROUNDS RD.
SCRANTON FIRE
- 6) QUINBY @ MCKINLEY
HAMBURG POLICE
- 7) MCKINLEY SERVICE GATE
FAIR PARKING STAFF
- 8) MCKINLEY PARKING EXIT
FAIR PARKING STAFF
- 9) MCKINLEY PARKING EXIT
FAIR PARKING STAFF
- 10) MCKINLEY @ CLARK ST.
ARMOR FIRE
- 11) CLARK ST. PARKING EXIT
HAMBURG FIRE
- 12) CLARK ST. @ TRAFFIC CIRCLE
HAMBURG VILL. PD-HAMBURG FIRE
- 13) SOUTH PARK SERVICE RD.
NYS POLICE
- 14) SOUTH PARK @ SOWLES
SCRANTON FIRE
- 15) MCKINLEY @ BAYVIEW
HAMBURG POLICE-ARMOR FIRE
- 16) MCKINLEY @ NEWTON
HAMBURG FIRE
- 17) MCKINLEY @ RT. 391
HAMBURG FIRE
- 18) SOUTH PARK @ RT. 20
HAMBURG POLICE-BIG TREE FIRE
- 19) MCKINLEY @ RT. 20
HAMBURG POLICE-BIG TREE FIRE



PEDESTRIAN TRAFFIC SIGNAL

EM **ERIE COUNTY FAIR** **EMERGENCY MANAGEMENT**

Think Appreciation



#ThinkFairThoughts

175th
ERIE COUNTY
FAIR
"Growing Strong"

Emergency Management Team

- Erie County Agricultural Society Management & Staff
- Erie County Agricultural Society Board of Directors (Policy Group)
- **Erie County Fair Emergency Management Staff**
- Erie County Fair Security
- Fairgrounds Gaming
- Town of Hamburg Emergency Management
- Town of Hamburg Police Department
- Armor Volunteer Fire Co.
- Contracted EMS Provider (AMR Medical Services)
- James E. Strates Shows
- Contracted Parking Vendor (SP Plus Parking)
- Contracted Safety Consultant (Occupational Safety & Environmental Associates, Inc.-OSEA)
- Erie County Department of Homeland Security & Emergency Services
- New York State Department of Homeland Security & Emergency Services (DHSES)
- United States Government (FBI)

#ThinkFair&Safe

A PLAN FOR PUBLIC SAFETY & EMERGENCY MANAGEMENT AT THE ERIE COUNTY FAIR



A low-angle, silhouetted photograph of a tightrope walker. The person is positioned in the upper center of the frame, walking a single wire that stretches diagonally from the bottom left towards the top right. They are holding a long, thin horizontal pole with both hands to maintain balance. Below the tightrope, several other parallel wires are visible, creating a sense of depth and scale. The background is a vast sky filled with soft, wispy clouds, illuminated by a low sun that creates a warm, golden glow. The overall composition is dramatic and emphasizes the height and isolation of the performer.



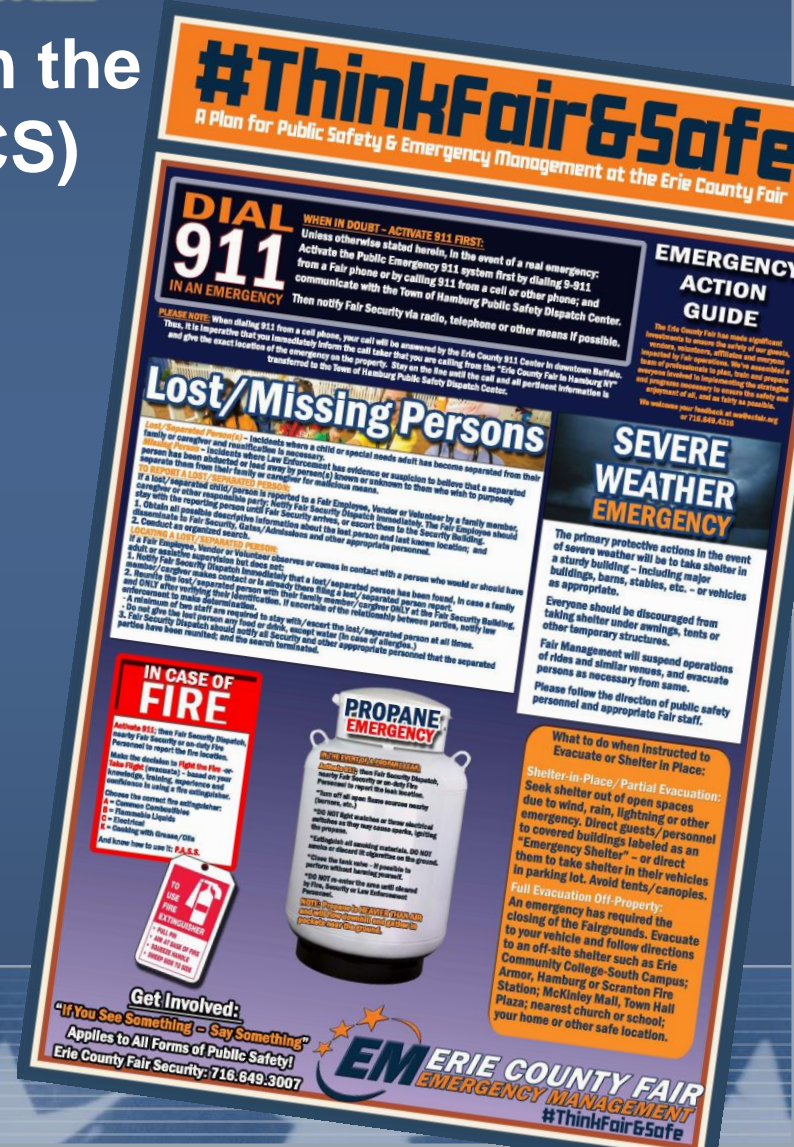
#ThinkFair&Safe

A PLAN FOR PUBLIC SAFETY & EMERGENCY MANAGEMENT AT THE ERIE COUNTY FAIR

- Trained Senior Management in the Incident Command System (ICS)
- Hired professional planners
- Collaborated in developing Emergency Action Plan (EAP)
- Trained Core Fair Staff, Security, Volunteers and Vendors in ICS & EAP
- Made it Personal

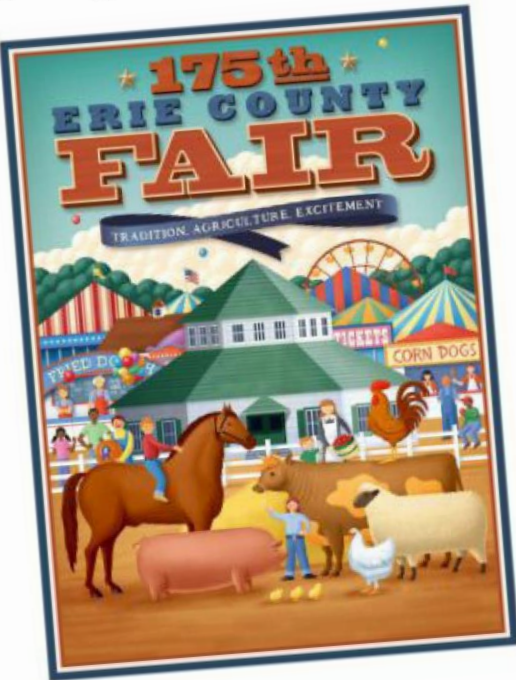
#ThinkFair&Safe

A PLAN FOR PUBLIC SAFETY & EMERGENCY MANAGEMENT AT THE ERIE COUNTY FAIR



Emergency Action Plan

ERIE COUNTY FAIR Emergency Action Plan



ERIE COUNTY FAIR EMERGENCY ACTION PLAN

DRAFT:	12/27/13	ADOPTED:		REVISED:	4/2/14
--------	----------	----------	--	----------	--------

TABLE OF CONTENTS

SECTION	PAGE
I. Purpose	4
II. Operations	4
III. Definitions	6
IV. Authority & Responsibility	6
V. Emergency Management Team	7
VI. Incident Command Post Location and Staffing	8
VII. Emergency Notifications & Communications	10
VIII. Emergency Public Information & Public Information Management	12
IX. Emergency Response	14
X. Sheltering/Evacuation	15
XI. Response to Specific Hazards	–
1. Severe Weather	16
2. Fire	18
3. Active Shooter	20
4. Mass Casualty Incident	23
5. Propane Emergency	27
6. Bomb Threat	28
7. Grandstand Evacuation	33
8. Mass Evacuation Transportation Plan	34
9. Midway Ride Emergency	35
10. Livestock Emergency	36
11. Crowd Surge/Unrest/Fight	38
12. Hazardous Materials Leak/Spill	40
13. Power Outage	43
14. Lost Person	44
XII. Training and Exercise	45
XIII. Plan Distribution, Maintenance, Review, and Updates	46

©2014 All rights reserved. No part of this document may be reproduced, distributed or transmitted in any form or by any means, including photocopying, recording, or other electronic or mechanical methods, without prior written permission of the Erie County Agricultural Society, Inc.

12/27/13

ADOPTED:

REVISED:

#ThinkFair&Safe

A PLAN FOR PUBLIC SAFETY & EMERGENCY MANAGEMENT AT THE ERIE COUNTY FAIR

- Got Creative:
 - Branded Emergency Management and Public Safety
 - #ThinkFair&Safe
 - *“If You See Something – Say Something!”*
- Doesn't apply to just terrorism
(Suspicious behavior, unsafe conditions or actions of others)



#ThinkFair&Safe

A PLAN FOR PUBLIC SAFETY & EMERGENCY MANAGEMENT AT THE ERIE COUNTY FAIR



#ThinkFair&Safe

A PLAN FOR PUBLIC SAFETY & EMERGENCY MANAGEMENT AT THE ERIE COUNTY FAIR



Interoperable Communications

In the event of an emergency,
our standard operating procedure will be to:

1. Activate the Public

Emergency 911 system *first*

and communicate with the Town of Hamburg
Public Safety Dispatch Center by dialing 911
from a cell or other phone.

**2. Followed by notification of Fair Security via
radio, telephone or other appropriate means.**

#ThinkFair&Safe

A PLAN FOR PUBLIC SAFETY & EMERGENCY MANAGEMENT AT THE ERIE COUNTY FAIR



Mass Notification:

#ThinkFair&Safe
A PLAN FOR PUBLIC SAFETY & EMERGENCY MANAGEMENT AT THE ERIE COUNTY FAIR

Welcome

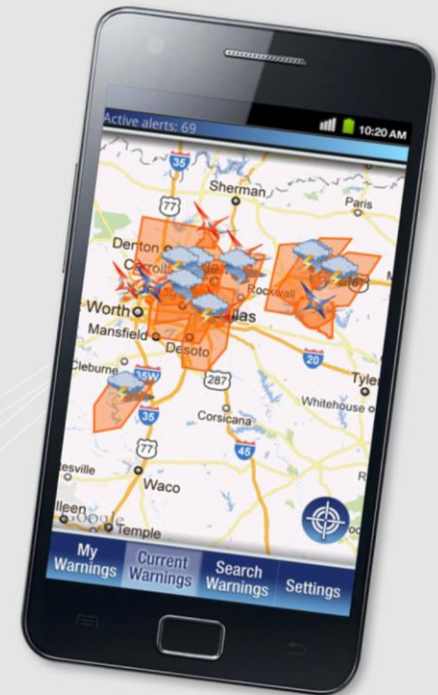


We care about
your safety.

Download the free
CodeRED Mobile Alert
app to stay informed
and aware, no matter
where you are! Receive
notifications that affect
you—directly to your
mobile device.



Mobile Alert



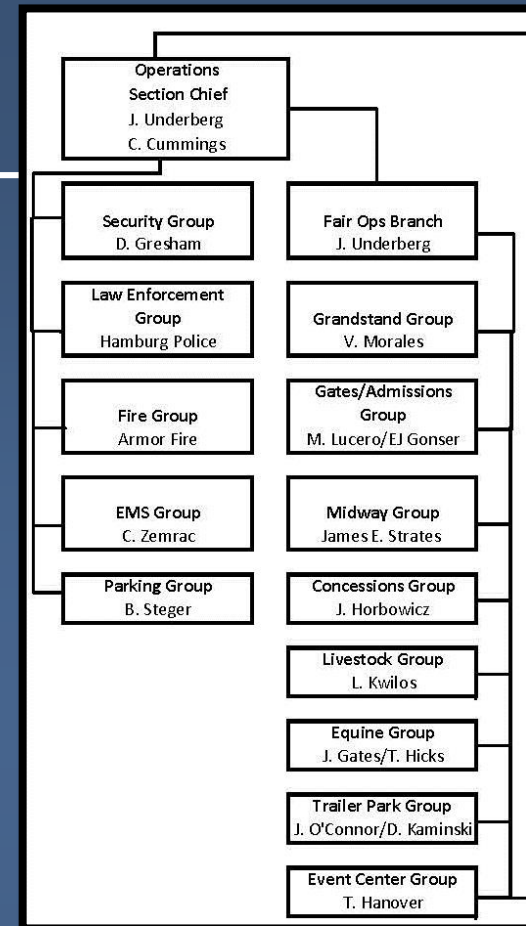
Download the app today.



#ThinkFair&Safe

A PLAN FOR PUBLIC SAFETY & EMERGENCY MANAGEMENT AT THE ERIE COUNTY FAIR

- Focused on the Big Picture
 - Hybrid Approach to Managing Fair and Public Safety Operations
 - Improved Situational Awareness
 - Looked Upstream
 - Daily Operational, Command and Security Briefings
 - Frequent Contact with Outside Partners
 - Adapted on the Fly and took Corrective Actions
 - Dealt with “The Event within the Event” separately



#ThinkFair&Safe

A PLAN FOR PUBLIC SAFETY & EMERGENCY MANAGEMENT AT THE ERIE COUNTY FAIR

INCIDENT ORGANIZATION CHART

1. Incident Name: Erie County Fair 2016

2. Operational Period:

Date From:

8/10/2016

Date To:

8/23/2016

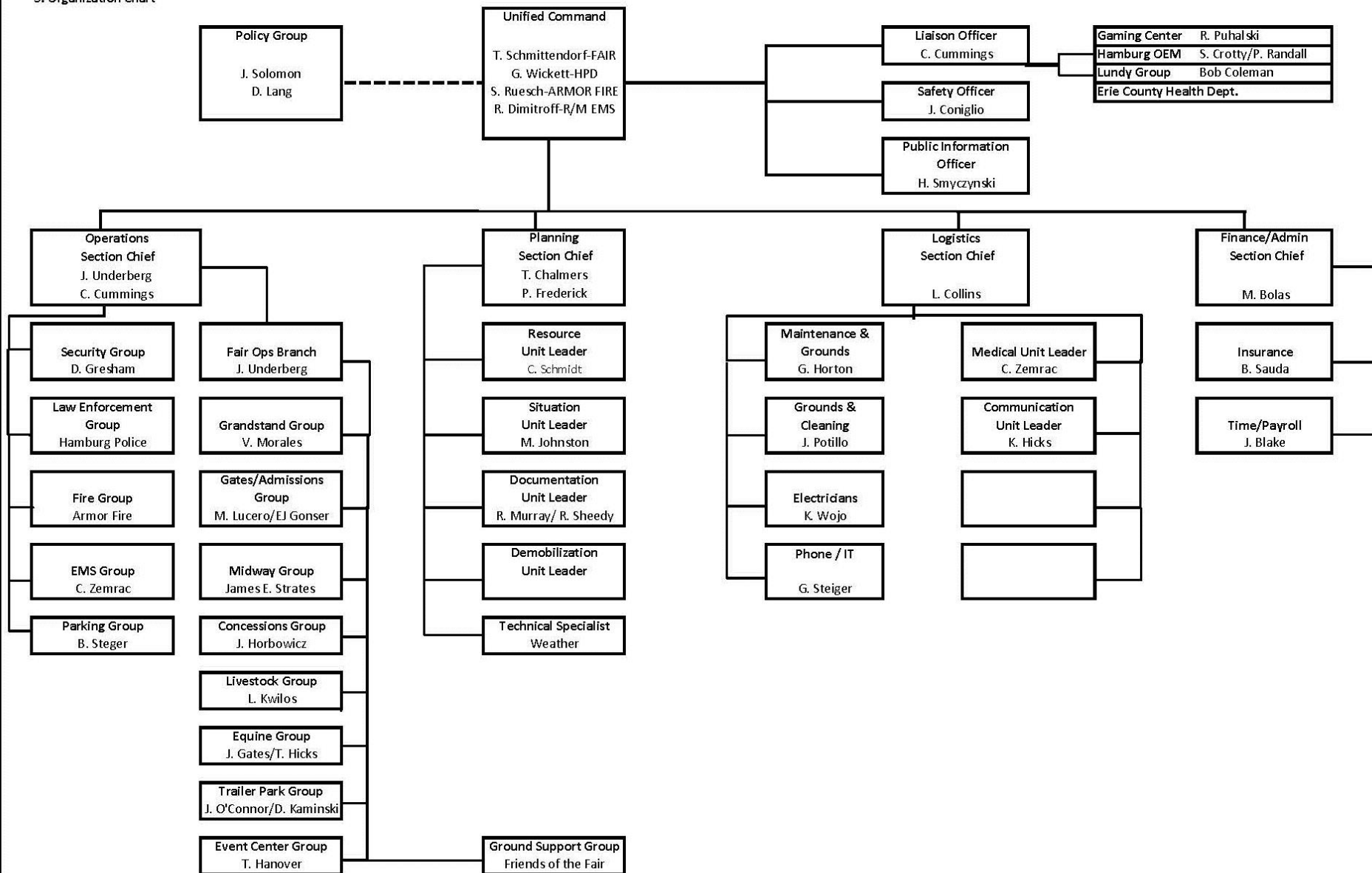
Time From:

0800 hrs

Time To:

0800 hrs

3. Organization Chart



4. Prepared By:

Name: T. Schmittendorf

Position/Title: IC

Date:

7/29/2016

Time:

0700 hours

#ThinkFair&Safe

A PLAN FOR PUBLIC SAFETY & EMERGENCY MANAGEMENT AT THE ERIE COUNTY FAIR

- Built Off Early Wins
 - Connected Dots
 - Solicited Feedback and Got Buy-in
 - Leveraged Public Safety Partners



#ThinkFair&Safe

A PLAN FOR PUBLIC SAFETY & EMERGENCY MANAGEMENT AT THE ERIE COUNTY FAIR



Security Challenges



- “It’s only a fair” semi-safe attitude towards security and emergency planning
- Pre-Fair Vulnerability
 - Lack of security presence
 - Open points-of-entry
- Gate screening
- Social Media Impact

#ThinkFair&Safe

A PLAN FOR PUBLIC SAFETY & EMERGENCY MANAGEMENT AT THE ERIE COUNTY FAIR

Security Challenges

- Grandstand/Special Events
- Revenue Protection
- Lost/Separated Parties
- Domestic Issues
- Crimes Against Children: Photographers and Pedophiles
- Animal Issues/ Animal Rights Activists
- Accidents and injuries



#ThinkFair&Safe

A PLAN FOR PUBLIC SAFETY & EMERGENCY MANAGEMENT AT THE ERIE COUNTY FAIR

Security Challenges

- Alcohol sales
 - Intoxicated patrons
 - Underage drinking
- Larceny
 - Inhouse and by visitors
- Midway & Cleaning Staff and other vendor issues
- Parking and vehicle incidents



#ThinkFair&Safe

A PLAN FOR PUBLIC SAFETY & EMERGENCY MANAGEMENT AT THE ERIE COUNTY FAIR

Gates & Gate Screening Issues

- Points of entry/access
 - Pedestrian and vehicular
 - Overnight considerations
 - Credentialing
- Perimeter issues
 - Fence jumping
 - Area resident issues
 - Parking
 - Ticket scalping
- Posted Policy & Training:
 - Weapons/Attire
 - Constitutional issues
 - Private vs Public Property
 - \$ Changes Everything!
 - Service animals

NO GANG COLORS



#ThinkFair&Safe

A PLAN FOR PUBLIC SAFETY & EMERGENCY MANAGEMENT AT THE ERIE COUNTY FAIR

Gates & Gate Screening Issues

- Utilize Homeland Security Large Event guideline
 - Provide training
- Equipment:
 - Tables
 - Gloves
 - Sticks to probe bags
- Keep the lines moving:
 - Random vs. Continuous
 - Feel good initiative or actual deterrent/enforcement?



#ThinkFair&Safe

A PLAN FOR PUBLIC SAFETY & EMERGENCY MANAGEMENT AT THE ERIE COUNTY FAIR

Successful Security Solutions:

- Utilize Mounted Division to your advantage
- Integrate:
 - 911 Center
 - Local PSAP
 - Fair Security
 - Parking
 - Gates/Admissions
 - Radio Training and Interoperability



#ThinkFair&Safe

A PLAN FOR PUBLIC SAFETY & EMERGENCY MANAGEMENT AT THE ERIE COUNTY FAIR

Successful Security Solutions:

- Leverage Outside Partners:
 - Town of Hamburg Police
 - Erie County Sheriff
 - NYS Police
 - FBI
 - US CBP
 - US Homeland Security
 - Erie County DHSES
- Keep Partners Informed
- Keep Partners Happy



#ThinkFair&Safe

A PLAN FOR PUBLIC SAFETY & EMERGENCY MANAGEMENT AT THE ERIE COUNTY FAIR

Importance of the Three Cs

- Cooperation
- Coordination
- Communication

The Fourth C:
Community

#ThinkFair&Safe

A PLAN FOR PUBLIC SAFETY & EMERGENCY MANAGEMENT AT THE ERIE COUNTY FAIR



I, the Lord,
speak the
truth;
I declare
what is right.
Isaiah 45:19



TIGERVILLE
FIRE
DEPARTMENT

The Real Keys to Emergency Planning



Stay in Your Lane!

***Eat Ice Cream
Every Day!***

***Sit Back & Enjoy the
Show with a Friend!***

#ThinkFair&Safe

A PLAN FOR PUBLIC SAFETY & EMERGENCY MANAGEMENT AT THE ERIE COUNTY FAIR



THE BEST 12 DAYS OF **SUMMER** AUGUST 8-19, 2018



#ThinkFair&Safe

A PLAN FOR PUBLIC SAFETY & EMERGENCY MANAGEMENT AT THE ERIE COUNTY FAIR

Emergency Planning:

A Fair Approach



Tiger Schmittendorf

em@ecfair.org | 716.777.0205

Chris Cummings | 716.949.0443

chris@SESProtects.com

Dave Gresham | 585.610.6026

security@ecfair.org

#ThinkFair&Safe

A PLAN FOR PUBLIC SAFETY & EMERGENCY MANAGEMENT AT THE ERIE COUNTY FAIR

